

# TOPSY™ 65 LITTER BIN

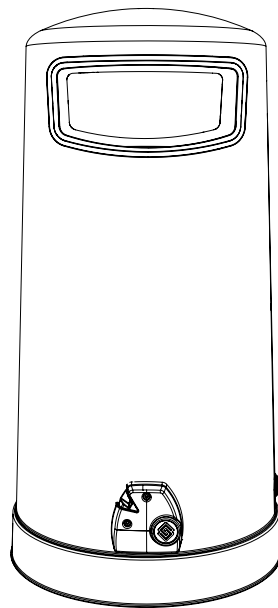
## OPERATING MANUAL

### IMPORTANT NOTE:

Prior to installation, it may be necessary to restrain the plinth to prevent it from spinning when removing the hood. Glasdon recommends **ALL TOPSY** litter bins be ground fixed or ballasted to maximise the performance of the unique locking system.

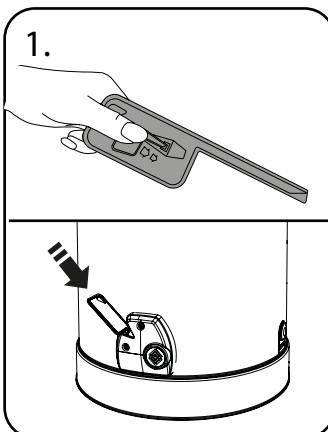
The bin must be sited on level ground. If you are not using Glasdon fixings you must ensure that 50mm diameter washers are used in order to secure the bin when ground fixing.

Ensure that all relevant personnel read the points listed within this leaflet and that a copy is given to staff involved with the maintenance of this product.

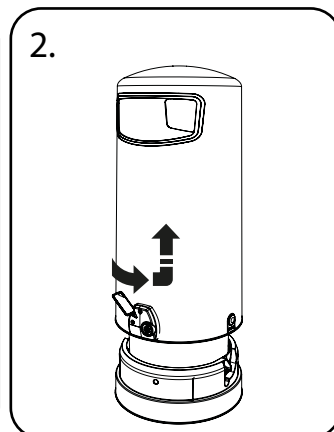


## OPERATING THE BIN

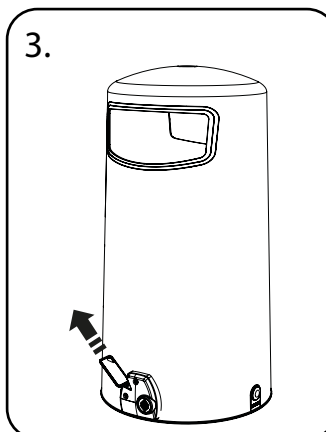
### OPENING/CLOSING WITH KEY & LOCK



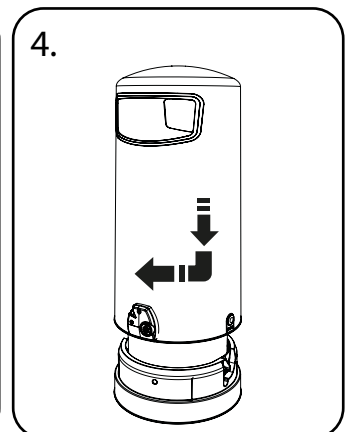
To open, ensure the illustration on the key is uppermost. Then insert the key all the way into the lock. (Do not turn the key.) This will release the locking mechanism.



With the key still in position, turn bin body anti-clockwise, and lift the bin body over the liner.

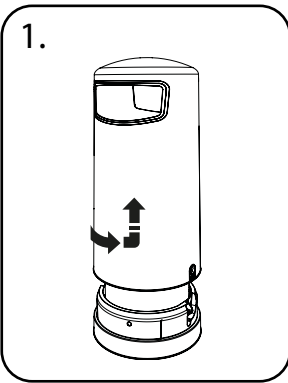


Remove the key from the lock.

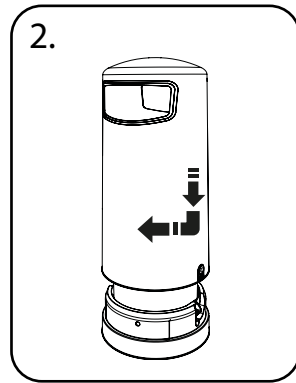


To close, lift bin body over the liner and lower to rest on plinth, turn clockwise until the bin body engages with the plinth track way and locks with a click.

## OPENING/CLOSING WITHOUT KEY & LOCK

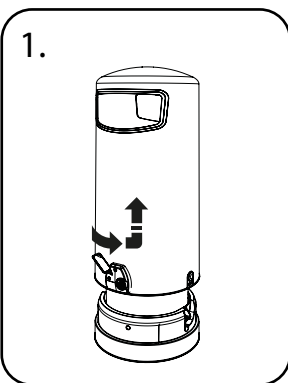


To open, turn bin body anti-clockwise, and lift the bin body over the liner.

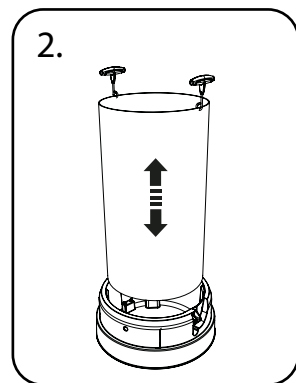


To close, lift bin body over the liner and lower to rest on plinth, turn clockwise until the bin body engages with the plinth track way.

## REMOVING LINER

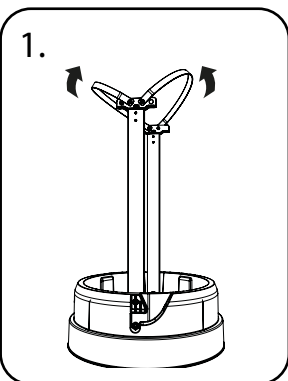


Unlock the bin like shown above.

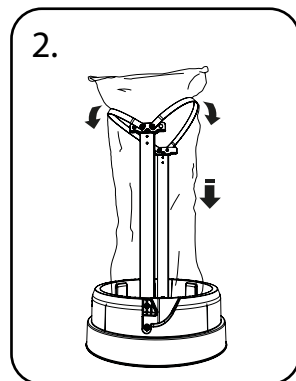


Lift the liner out of the plinth, empty & place back into the plinth and ensure the handles drop outside the liner.

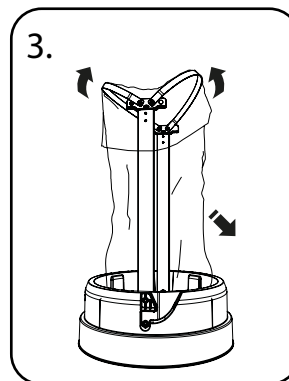
## USING SACK RETENTION - Size Q - Pack of 200no. Clear (142/1300)



Release the sack retention bands by lifting up.




Insert the sack, fold over the sack retention bands and push the sack bands back into position.



To remove the sack, lift sack retention bands.

## CLEANING YOUR BIN

We would recommend a warm pressure wash with soap or alternatively hand wash with 10% solution of mild detergent in warm water using a soft bristle brush followed by a rinse with clean water.

 **Glasdon** AND TOSPY, ARE TRADEMARKS OR REGISTERED TRADEMARKS OF GLASDON GROUP OR ITS SUBSIDIARIES IN THE U.K. AND OTHER COUNTRIES.

- A planned maintenance schedule or regular inspection is recommended, replacing components as necessary.
- Replacement components are available direct from GLASDON.
- GLASDON cannot be held responsible for claims arising from incorrect installation, unauthorised modifications or misuse of the product.

Stock No. C000/0541 - DWG No. 07B385-10 / Issue 1 - August 2024

© Copyright 08/2024

Glasdon UK Ltd reserve the right to alter specifications without prior notice.

 **Glasdon®**  
**Glasdon U.K. Limited**  
Preston New Road  
BLACKPOOL  
Lancashire  
FY4 4UL  
Tel: (01253) 600410  
Fax: (01253) 792558  
e-mail: sales@glasdon-uk.co.uk  
web: www.glasdon.com